



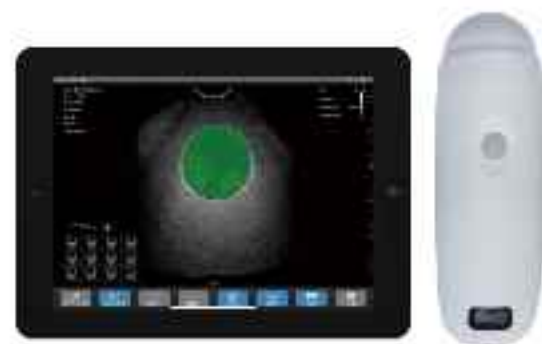
BProbe-5 4D Wireless Bladder Scanner



Guangzhou SonoStar Technologies Co., Limited

Add: Building 7, No. 6 Hengchuang Avenue, Zhongjia Town, Zengcheng District, Guangzhou, PRC
Tel: +86-20-32382195 Web: www.sonostar.com E-mail: sonostar@sonostar.net

- Small and lightweight, easy to carry
- Wireless connection for easy and easy operation
- R20 convex array 4D scanning, clear image
- High accuracy (error less than 5%)
- Fast scanning measurement speed (2s)
- Combining AI algorithm for more accurate edge measurement



Only one Probe, work with iPad!

POCKET



Advantage:

- Only one probe, convenient for carry.
- Wireless, convenient for operation.
- 4D array scan, very clear image.
- High accurate (5% inaccuracy).
- High speed on scan and process (2s).
- Without distortion of mechanical scanning.
- More advanced algorithm, more powerful bladder wall recognition technology (high recognition rate for the bladder wall with air), more accurate contour technology, higher accuracy of the probe makes scanning results more accurate.
- New algorithm, the measurement results are not subject to the bladder shape and size.
- No need to select Gender, Age group, and no need to consider special cases such as the effect of hysterectomy on the measurement results. Good compatibility for different bladders, no substantial error when measuring small volume or special shape bladders, easier to operate and use.
- High precision robot error, precise positioning, never need to calibration.
- Waterproof probe.

Compare item	3D scan by 4 probe system	4D scan by array element
Image quality	Blurry dark	Clear dark
Inaccuracy	>5%	<5%
Scan & process time	>1s	<2s
Image distortion	With mechanical scanning distortion	Without distortion
Calibration	Need calibration every year	Never need



Wireless Charge (also can charge by USB cable)

With Scan Key on Probe

Specifications:

1. Scan mode: array probe, 4D scan.
2. Supporting system: Apple iOS;
3. Measuring range: 10ml ~ 2300ml.
4. Automatic measurement inaccuracy: <5%.
5. Scan and process < 2 seconds.
6. Scanned image display frame: 10 frames / seconds.
7. Case Storage: by tablet or mobile phone.
8. Printing: external wireless thermal printer.
9. Battery: Built-in battery, charge one time can work on more than 200 patients.
10. Power: Wireless charge or by USB cable charge.
11. Dimension: 180mm (length) * 60mm (width) * 60mm (thickness).
12. Weight: 420g.



Standard Configuration:

- 4D Wireless probe 1 pcs
- Charge use USB cable 1 pcs
- Software disk 1 pcs
- Manual 1 pcs



Optional:

- Tablet, Smart mobile phone
- Bluetooth wireless printer
- Wireless charge pad, Wireless charge battery bank
- Trolley and cradle

Function and Application of bladder scanner:

The bladder scanner is used to non-invasively visualize, monitor and measure urine volume in the bladder, to determine whether to urinate and the suitable urinary output, and also can used to prevent inappropriate insertion of the Catheter into the bladder.

It is widely used in urology, rehabilitation, surgical, operation room, and home health care.

Benefits of Bladder Scanning:

- Measures bladder volume and Post voiding Residual (PVR)
- Prevents unnecessary catheterization and patient discomfort
- Reduces Catheter Associated Urinary Tract Infection (CAUTI)
- Monitors bladder non-invasively to prevent urinary retention
- Monitors post-operative recovery
- Reduces hospital costs (disposables)
- Promotes staff efficiency and requires little training



Widely used in hospital:

Surgery, Intensive section, ICU, urine section, women and boy section, orthopedics, nerve medicine, child section, hearing section.

Latent application area:

Apexin area, Urinary incontinence guide, SCIMS, Mentally healing institution, Reshome.

Family tent:

SCIMS, Community medical center, Family and community doctor.